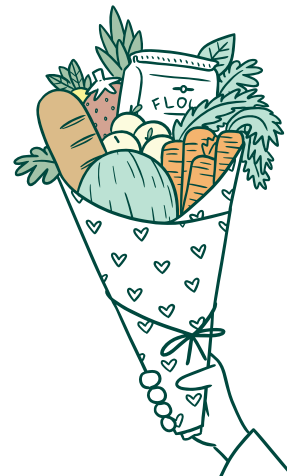




Equalizing access to food through technology and community partnerships

Who We Are

We believe that food is medicine. We equalize access to food by working alongside communities, food banks, food pantries, health systems, and other partners, to ensure that neighbors can easily access support—when and where they need it.



Our Approach



Food Access

Helping neighbors easily find essential foods and services when and where they need it through our food and resource map and texting tools.



Food Security

Partnering with local pantries and community-based organizations to provide nutritious foods in historically-disinvested communities on the South and West Sides of Chicago.



Food is Medicine

Connecting charitable food, community-based organizations, and healthcare providers to deliver medically-tailored groceries to neighbors with chronic conditions.



Impactful Innovation

Our technology received a coveted Chicago Innovation Award in partnership with the Greater Chicago Food Depository, for one of the most innovative new tech solutions driving social impact in 2022.



Food Access

Our platform provides access to essential foods and services to neighbors across the country. We give food banks and pantries real-time tools to share and communicate accurate information, from food and resource maps to text alerts.

90+ food banks

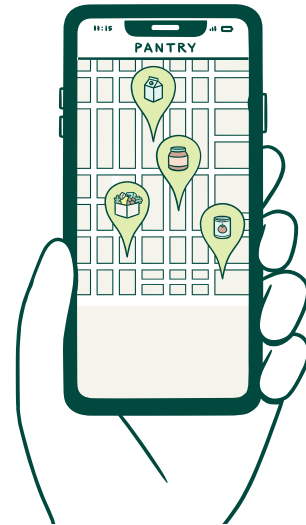
13+ million neighbors

18,000+ pantries

8 states with full statewide coverage

34 states and growing

470,000+ monthly searches



Food Security

Currently, in Chicago's Austin neighborhood, we partner with four local pantries, produce providers, and delivery partners to reach over 150 food insecure neighbors with disabilities through our in-home delivery program.

220,000+
meals delivered

43%
reduction in food-
related stress

22%
reduction in
food insecurity

\$192K
injected into the
local economy

MacArthur
Foundation

Northwestern Medicine®
Feinberg School of Medicine

Thanks to a grant from the MacArthur Foundation, we partnered with the Northwestern Feinberg School of Medicine Jia Lab to evaluate the impact of our program in the Austin community. **Click here** to read the full report.

“We are proud to work with partners like Vivory Community on this innovative program and build a model for other communities to replicate, while also increasing access to our city’s food pantries.”

Rachel Arfa
MOPD Commissioner, City of Chicago





Food is Medicine

We partner with Sinai Chicago and the Sinai Urban Health Institute, as well as other healthcare providers, to deliver medically-tailored groceries to food insecure neighbors with chronic conditions. Our hyper-local, trust-based model bridges food, healthcare, and community partners to improve health outcomes, reduce barriers to care, and strengthen community well-being.

50,000+
meals delivered

87% of participants
are healthier

93% saw lowered
blood pressure

81% saw weight
improvement

“By partnering to provide patients with nutritious, medically-tailored groceries and produce, Vivory Community and Sinai Chicago are truly changing lives. This program is about giving people in need the ability to fundamentally take charge of their health for the long term with dignity and respect. We’re proud of the difference we’re making together.”

Dr. Ngozi Ezike
President & CEO, Sinai Chicago



Our Partners

Our impact is only possible through the food banks, pantries, and community partners who bring this work to life every day.



Looking to the Future



With a robust pipeline, we're on track to add **30+ food banks** each year and expand to full statewide coverage—building a single, connected, data-driven view of the charitable food system nationwide.



We'll reach **500 participants** across Chicago in 2026 through our food delivery programs, while expanding support to include social care resources and benefits like SNAP and Medicaid.

Our Supporters

We are deeply grateful to the funders and partners whose generosity fuels this work.



Join Us

Help us equalize access to food for all and build thriving communities.

Contact: danya@vivorycommunity.org

Donate: vivory.org/support

